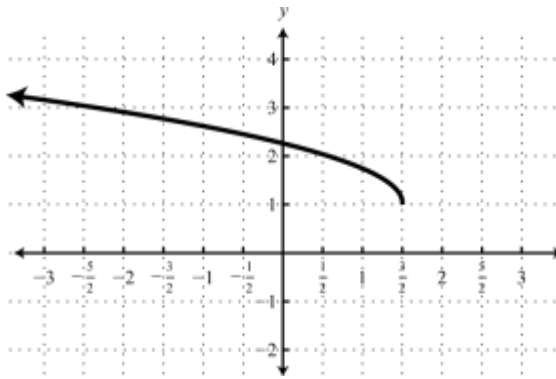


Graphing Functions Review



Graph #1 **Use interval notation!!!!**

What type of function is it?

Domain:

Range:

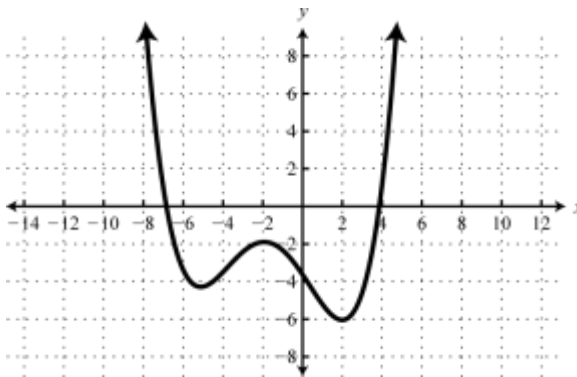
Increasing Interval(s):

Decreasing Interval(s):

Minimum:

X Intercept(s):

Y Intercept(s):



Graph #2 **Use interval notation!!!!**

Domain:

Range:

Increasing Interval(s):

Decreasing Interval(s):

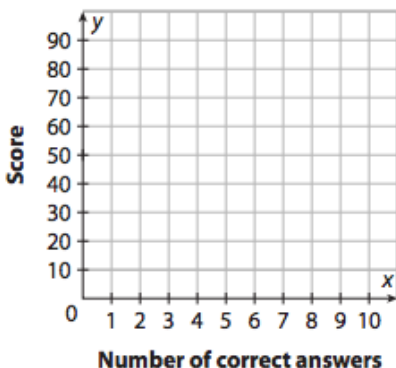
Minimum:

X Intercept(s):

Y Intercept(s):

What is the average rate of change on the interval $-7 \leq x \leq 2$?

3. A math test is made up of 7 problems, each worth 10 points. There is no partial credit. Every test taker receives 30 points for taking the test. Graph this situation



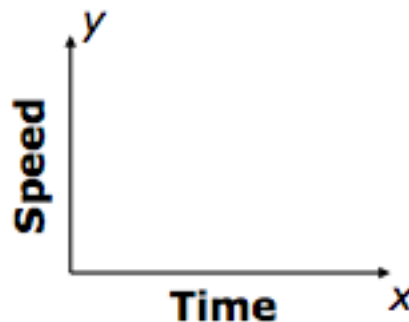
Domain:

Range:

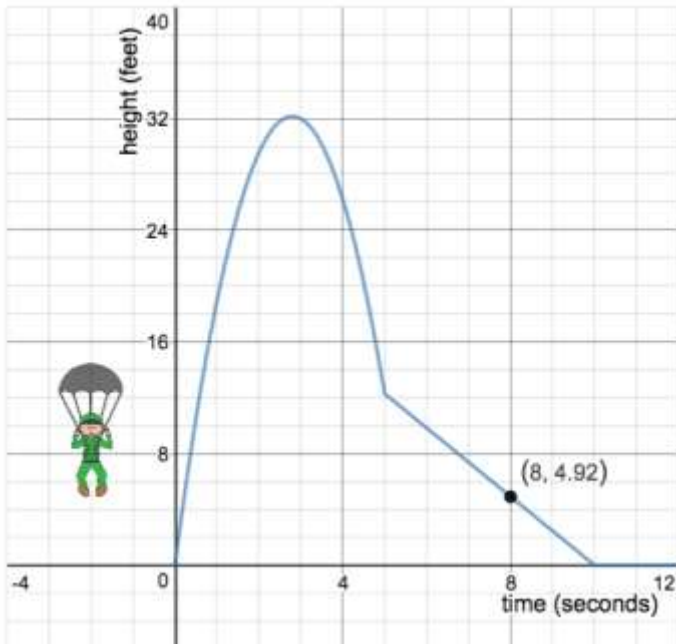
There is a back!

4. Graph the situation:

A truck driver enters a street, drives at a constant speed, stops at a light, and then continues.



Remember Cannon Man?

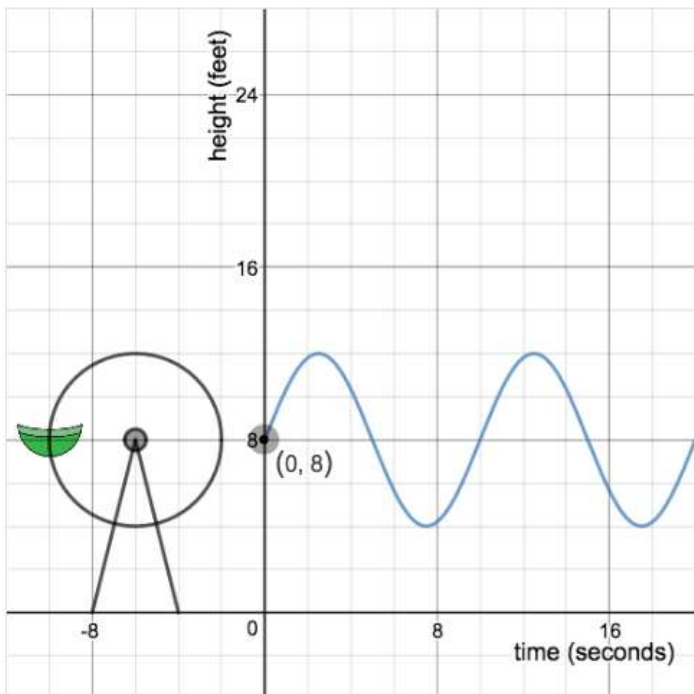


"After 8 seconds, Cannon Man was 4.92 feet off the ground."

Translate this into function notation.

If $f(a) = 32$, find the value of a .

What does this mean in terms of the situation?



If $f(4) = a$, find the value of a .

What does this mean in terms of the situation?

Afi claims that $f(a) = 9.3$ has multiple solutions.

Iris claims that $f(9.3) = a$ has multiple solutions.

Who is correct?

- Afi
- Iris
- Both
- Neither